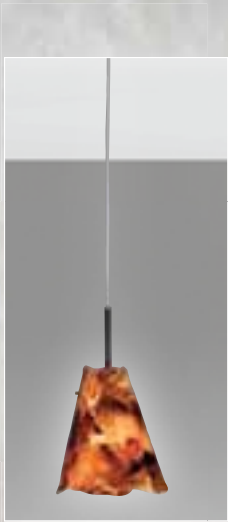




51830-12-IVO-E



51830-06-BSG-BR



51830-12-FLM-E

SHOWN

51830-12-IVO-E Ivory Opalescent/Satin Nickel.
Vanilla interior layer. 10' clear SVT cord.

51830-06-BSG-BR Burnt Sugar/Dark Bronze.
Vanilla interior layer. 10' clear SVT cord.

51830-12-FLM-E Red Flame/Satin Nickel.
Vanilla interior layer. 10' clear SVT cord.

LAMPING

Incandescent:

51830-12 1 x 100W A-19 medium
51830-06 1 x 60W G16-1/2 cand.

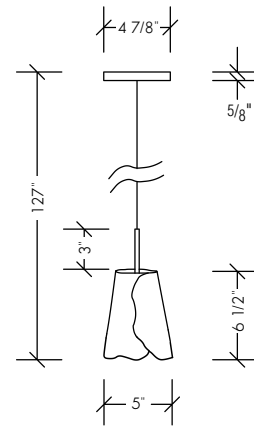
Halogen (-HAL):

51830-12 1 x 100W BT-15 medium 120V
51830-06 1 x 60W T-3 KX-2000 cand. 120V

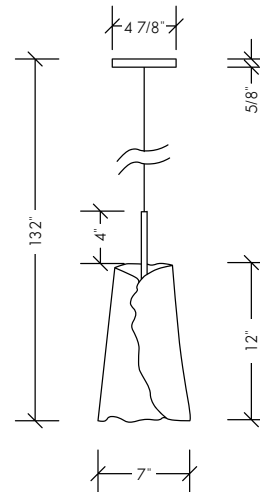
ECO Compact fluor.:

51830-12 1 x 18W G24q-2 quad 4-pin 120V

51830-06



51830-12



AVAILABLE COLORS



Amber Brulée (ACB)



Bronze Mist (BZM)



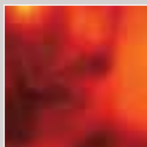
Burnt Sugar (BSG)



Green/Teal/Purple (GTP)



Ivory Opalescent (IVO)



Red Flame (FLM)

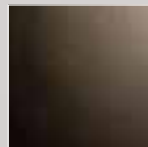


Red Indigo (RID)



Yellow Green (YLG)

AVAILABLE METAL FINISHES



Dark Bronze (BR)



Satin Nickel (E)

ALUMENT® art objects are handmade individually. Variations in color, pattern, surface texture and size are representative of the wonder of ALUMENT® and are not considered defects.