



CHIME TRIPLE
PENDANT & SCONCE

SHOWN

56830-20-FLM-E Red Flame/Satin Nickel.
Stainless steel support cables with 10' clear SVT cord.
Vanilla interior layer.

66830-20-IVO-E Ivory Opalescent/Satin Nickel.
Vanilla interior layer. Acrylic top lens.

LAMPING

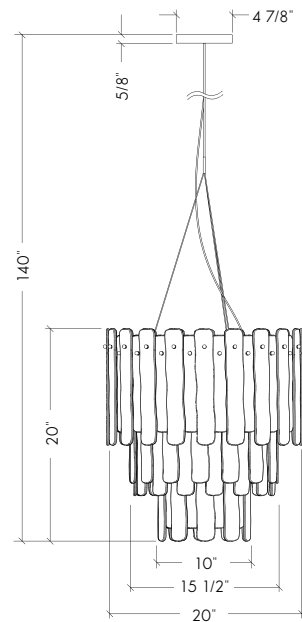
Incandescent: 6 x 60W B-13 medium
Halogen (-HAL): 6 x 60W BT-15 medium 120V
ECO Compact fluor. (-CFE):
6 x 13W G24q-1 quad 4-pin 120V



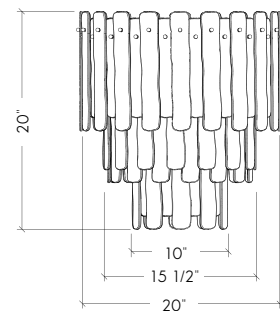
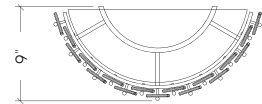
56830-20-FLM-E Pendant

66830-20-IVO-E Sconce

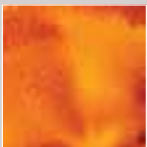
56830-20 Pendant



66830-20 Sconce



AVAILABLE
COLORS



Amber Brulée (ACB)



Bronze Mist (BZM)



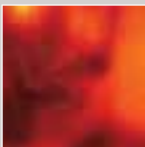
Burnt Sugar (BSG)



Green/Teal/Purple (GTP)



Ivory Opalescent (IVO)



Red Flame (FLM)



Red Indigo (RID)



Yellow Green (YLG)

AVAILABLE
METAL FINISHES



Dark Bronze (BR)



Satin Nickel (E)

ALUMENT® art objects are handmade individually. Variations in color, pattern, surface texture and size are representative of the wonder of ALUMENT® and are not considered defects.